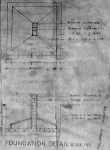


SITE PLAN



GENERAL SPECIFICATION

1. GENERAL NOTES  
 2. MATERIALS  
 3. CONSTRUCTION  
 4. FINISHES  
 5. UTILITIES  
 6. PAINTS  
 7. FURNITURE  
 8. EQUIPMENT  
 9. SIGNAGE  
 10. LIGHTING  
 11. SECURITY  
 12. SCHEDULES

1. GENERAL NOTES  
 2. MATERIALS  
 3. CONSTRUCTION  
 4. FINISHES  
 5. UTILITIES  
 6. PAINTS  
 7. FURNITURE  
 8. EQUIPMENT  
 9. SIGNAGE  
 10. LIGHTING  
 11. SECURITY  
 12. SCHEDULES

DATE	12/17/48
SCALE	1" = 10'
PROJECT	...
DESIGNER	...
CHECKED	...
DATE	12/17/48

**GENERAL**

1. GENERAL NOTES  
 2. MATERIALS  
 3. CONSTRUCTION  
 4. FINISHES  
 5. UTILITIES  
 6. PAINTS  
 7. FURNITURE  
 8. EQUIPMENT  
 9. SIGNAGE  
 10. LIGHTING  
 11. SECURITY  
 12. SCHEDULES

10 234-110/107









57

SCHEDULE OF JOBBY

NO.	DESCRIPTION	UNIT PRICE
001	WORK ORDER	100.00
002	CONCRETE WORK	100.00
003	STEEL WORK	100.00
004	PAINT WORK	100.00
005	ROOF WORK	100.00
006	MECHANICAL WORK	100.00
007	ELECTRICAL WORK	100.00
008	PLUMBING WORK	100.00
009	FINISH WORK	100.00
010	CONTRACTOR'S PROFIT	100.00
011	TOTAL	1000.00

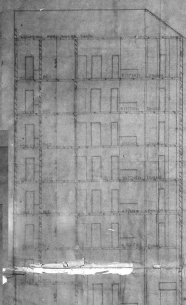
AREA STATEMENT

NO.	DESCRIPTION	AREA
001	WORK ORDER	100.00
002	CONCRETE WORK	100.00
003	STEEL WORK	100.00
004	PAINT WORK	100.00
005	ROOF WORK	100.00
006	MECHANICAL WORK	100.00
007	ELECTRICAL WORK	100.00
008	PLUMBING WORK	100.00
009	FINISH WORK	100.00
010	CONTRACTOR'S PROFIT	100.00
011	TOTAL	1000.00

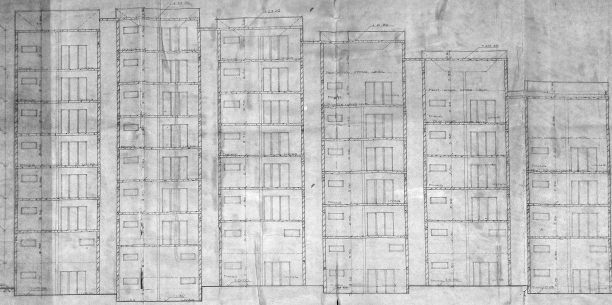
PERMANENT OFFICE



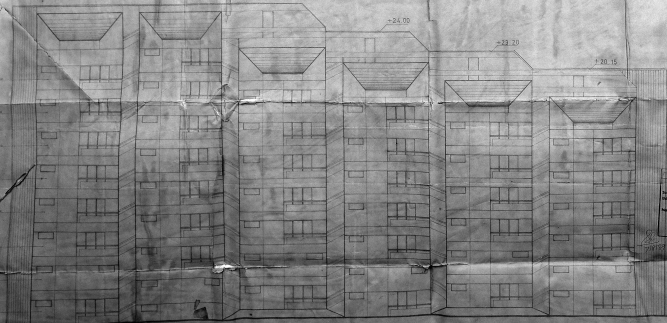
RECEIVED  
 10/10/1950  
 10/10/1950  
 10/10/1950  
 10/10/1950



SECTION X



SECTION Y



ELEVATION

APPROVED  
 10/10/1950  
 10/10/1950  
 10/10/1950

*Handwritten signature and notes:*  
 10/10/1950  
 10/10/1950

Small

10/10/1950



FIFTH FLOOR PLAN

FOURTH FLOOR PLAN

THIRD FLOOR PLAN

*Chapman*  
**APPROVED**  
Signed on the \_\_\_\_\_  
at \_\_\_\_\_  
1917  
\_\_\_\_\_  
Architect

57  
SCALE  
1/4" = 1'-0"  
REPRODUCED FROM THE  
RECORDS OF THE  
ARCHITECTURAL  
DIVISION  
A 22-1047

REPRODUCED FROM THE  
RECORDS OF THE  
ARCHITECTURAL  
DIVISION  
A 22-1047

- Blanchard*
- 1. J. H. BROWN, ARCHT.
  - 2. J. H. BROWN, ARCHT.
  - 3. J. H. BROWN, ARCHT.
  - 4. J. H. BROWN, ARCHT.
  - 5. J. H. BROWN, ARCHT.
  - 6. J. H. BROWN, ARCHT.
  - 7. J. H. BROWN, ARCHT.
  - 8. J. H. BROWN, ARCHT.
  - 9. J. H. BROWN, ARCHT.
  - 10. J. H. BROWN, ARCHT.
  - 11. J. H. BROWN, ARCHT.
  - 12. J. H. BROWN, ARCHT.
  - 13. J. H. BROWN, ARCHT.
  - 14. J. H. BROWN, ARCHT.
  - 15. J. H. BROWN, ARCHT.
  - 16. J. H. BROWN, ARCHT.
  - 17. J. H. BROWN, ARCHT.
  - 18. J. H. BROWN, ARCHT.
  - 19. J. H. BROWN, ARCHT.
  - 20. J. H. BROWN, ARCHT.
  - 21. J. H. BROWN, ARCHT.
  - 22. J. H. BROWN, ARCHT.
  - 23. J. H. BROWN, ARCHT.
  - 24. J. H. BROWN, ARCHT.
  - 25. J. H. BROWN, ARCHT.
  - 26. J. H. BROWN, ARCHT.
  - 27. J. H. BROWN, ARCHT.
  - 28. J. H. BROWN, ARCHT.
  - 29. J. H. BROWN, ARCHT.
  - 30. J. H. BROWN, ARCHT.
  - 31. J. H. BROWN, ARCHT.
  - 32. J. H. BROWN, ARCHT.
  - 33. J. H. BROWN, ARCHT.
  - 34. J. H. BROWN, ARCHT.
  - 35. J. H. BROWN, ARCHT.
  - 36. J. H. BROWN, ARCHT.
  - 37. J. H. BROWN, ARCHT.
  - 38. J. H. BROWN, ARCHT.
  - 39. J. H. BROWN, ARCHT.
  - 40. J. H. BROWN, ARCHT.
  - 41. J. H. BROWN, ARCHT.
  - 42. J. H. BROWN, ARCHT.
  - 43. J. H. BROWN, ARCHT.
  - 44. J. H. BROWN, ARCHT.
  - 45. J. H. BROWN, ARCHT.
  - 46. J. H. BROWN, ARCHT.
  - 47. J. H. BROWN, ARCHT.
  - 48. J. H. BROWN, ARCHT.
  - 49. J. H. BROWN, ARCHT.
  - 50. J. H. BROWN, ARCHT.
  - 51. J. H. BROWN, ARCHT.
  - 52. J. H. BROWN, ARCHT.
  - 53. J. H. BROWN, ARCHT.
  - 54. J. H. BROWN, ARCHT.
  - 55. J. H. BROWN, ARCHT.
  - 56. J. H. BROWN, ARCHT.
  - 57. J. H. BROWN, ARCHT.
  - 58. J. H. BROWN, ARCHT.
  - 59. J. H. BROWN, ARCHT.
  - 60. J. H. BROWN, ARCHT.
  - 61. J. H. BROWN, ARCHT.
  - 62. J. H. BROWN, ARCHT.
  - 63. J. H. BROWN, ARCHT.
  - 64. J. H. BROWN, ARCHT.
  - 65. J. H. BROWN, ARCHT.
  - 66. J. H. BROWN, ARCHT.
  - 67. J. H. BROWN, ARCHT.
  - 68. J. H. BROWN, ARCHT.
  - 69. J. H. BROWN, ARCHT.
  - 70. J. H. BROWN, ARCHT.
  - 71. J. H. BROWN, ARCHT.
  - 72. J. H. BROWN, ARCHT.
  - 73. J. H. BROWN, ARCHT.
  - 74. J. H. BROWN, ARCHT.
  - 75. J. H. BROWN, ARCHT.
  - 76. J. H. BROWN, ARCHT.
  - 77. J. H. BROWN, ARCHT.
  - 78. J. H. BROWN, ARCHT.
  - 79. J. H. BROWN, ARCHT.
  - 80. J. H. BROWN, ARCHT.
  - 81. J. H. BROWN, ARCHT.
  - 82. J. H. BROWN, ARCHT.
  - 83. J. H. BROWN, ARCHT.
  - 84. J. H. BROWN, ARCHT.
  - 85. J. H. BROWN, ARCHT.
  - 86. J. H. BROWN, ARCHT.
  - 87. J. H. BROWN, ARCHT.
  - 88. J. H. BROWN, ARCHT.
  - 89. J. H. BROWN, ARCHT.
  - 90. J. H. BROWN, ARCHT.
  - 91. J. H. BROWN, ARCHT.
  - 92. J. H. BROWN, ARCHT.
  - 93. J. H. BROWN, ARCHT.
  - 94. J. H. BROWN, ARCHT.
  - 95. J. H. BROWN, ARCHT.
  - 96. J. H. BROWN, ARCHT.
  - 97. J. H. BROWN, ARCHT.
  - 98. J. H. BROWN, ARCHT.
  - 99. J. H. BROWN, ARCHT.
  - 100. J. H. BROWN, ARCHT.

APPROVED  
Signed on the \_\_\_\_\_  
at \_\_\_\_\_  
1917  
\_\_\_\_\_  
Architect

APPROVED  
Signed on the \_\_\_\_\_  
at \_\_\_\_\_  
1917  
\_\_\_\_\_  
Architect





15  
101

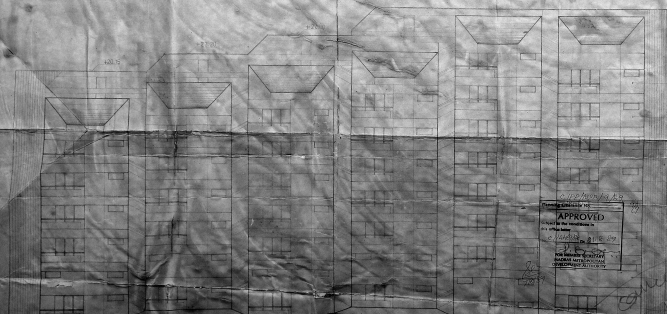
Approved  
M. C. H. P. A. S. I. C.  
M. C. H. P. A. S. I. C.  
M. C. H. P. A. S. I. C.  
A. 230-100/100

PLANNING AND ARCHITECTURE  
INCORPORATED  
1000 W. 10th St.  
WICHITA, KANSAS  
A. 230-100/100



SECTION XX

SECTION YY



ELEVATION

Approved by  
M. C. H. P. A. S. I. C.  
**APPROVED**  
M. C. H. P. A. S. I. C.  
M. C. H. P. A. S. I. C.  
M. C. H. P. A. S. I. C.

*Handwritten signature*

PLANNING AND ARCHITECTURE  
INCORPORATED  
1000 W. 10th St.  
WICHITA, KANSAS  
A. 230-100/100